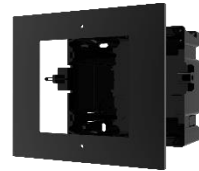


**DS-KD-ACF1/Black/Europe BV
2nd Video Intercom Brackets**

- 1 module accessories, black color version, used for Flush mounting
- Includes a stainless or plastic flush mounting box for 1 module, a metal front panel for 1 module and some other necessary accessories.

▪ Specification

General	
Working temperature	-40° C to +60° C (-40° F to 140° F)
Weight	366 g (with packaging) 195 g (without packaging)
Dimension (W × H × D)	For Cover 134 x 124 x 4 mm(5.28" x 4.88" x 0.16"), For Gang box 134 × 135 × 56 mm (5.28" × 5.31" × 2.20")
Material	Aviation Aluminum

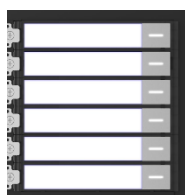
▪ Available Model

DS-KD-ACF1(O-STD)/Black/Europe BV

▪ Accessory



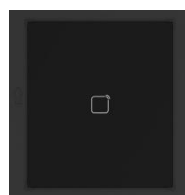
DS-KD8003-IME1(B)



DS-KD-KK



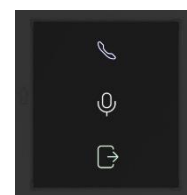
DS-KD8003-IME1/S(B)



DS-KD-E



DS-KD-KK/S



DS-KD-IN



DS-KD8003Y-IME2/NS



DS-KD8003Y-IME2



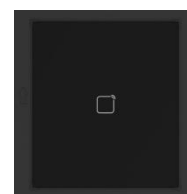
DS-KD-KP



DS-KD-DIS



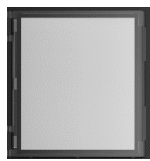
DS-KD-KP/S



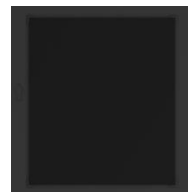
DS-KD-M



DS-KD8003Y-IME2/S



DS-KD-INFO



DS-KD-BK



DS-KD8003-IME1/NS(B)



DS-KD-KP
Black color version

Headquarters

No.555 Qianmo Road, Binjiang District,
Hangzhou 310051, China
T +86-571-8807-5998
www.hikvision.com



Follow us on social media to get the latest product and solution information.

